

LS Simple™ Cabling Solution

Enhanced Rear IDC Modular Jack

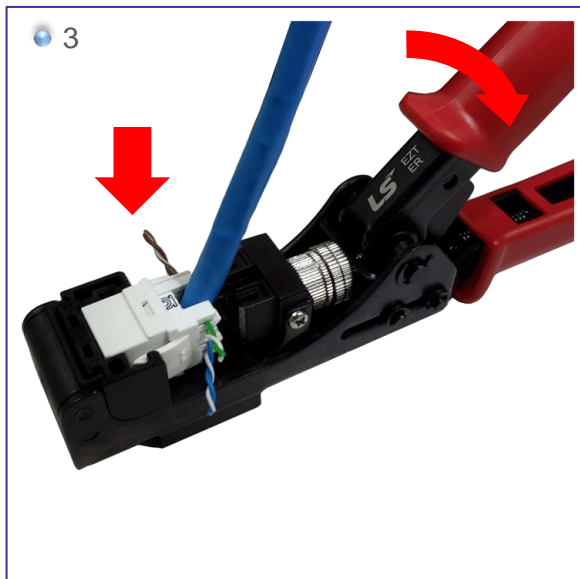
Part No.: LS-MJ-UC(5E)(6)(6A)-xx-ERI
LS-MJ-UC(5E)(6)(6A)-xx-ERD



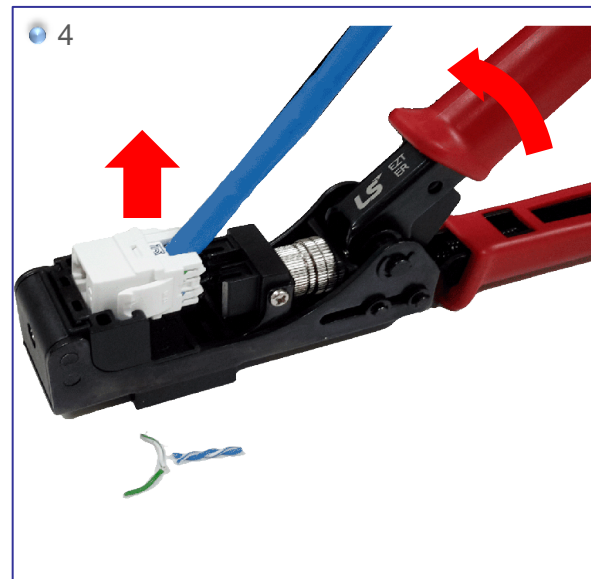
1. Prepare the Easy Termination with ERI Modular Jack.



2. Place the wires into the slots according to the wire scheme.



3. Put the Keystone Jack onto the Easy Tool in the right position and then squeeze the tool then terminate all wires and trim the excess wires at the same time.



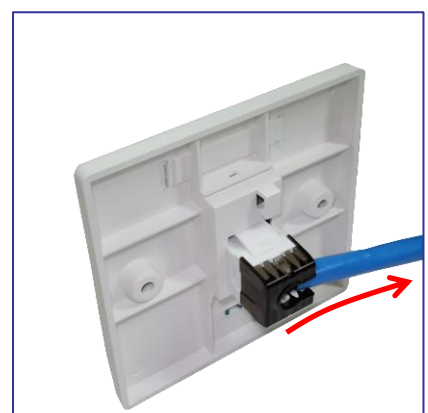
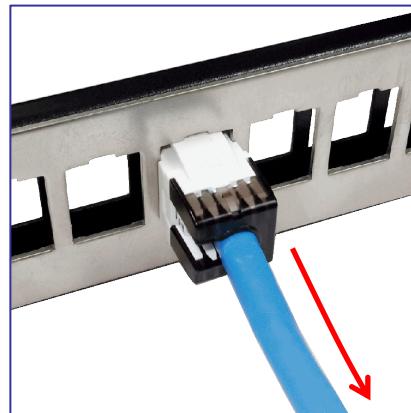
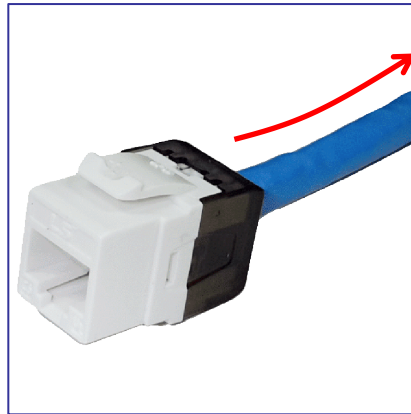
4. Remove the Keystone Jack vertically away from the termination tool.

LS Simple™ Cabling Solution

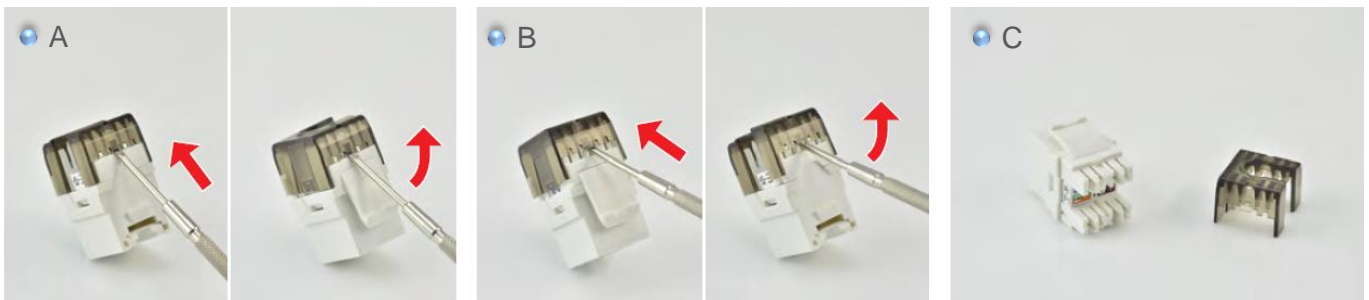
Enhanced Rear IDC Modular Jack

Part No.: LS-MJ-UC(5E)(6)(6A)-xx-ERI
LS-MJ-UC(5E)(6)(6A)-xx-ERD

5. Place the cap and be completion and adjust cable direction.



UNINSTALL



- ※ A. Inert the screwdriver into the slot between Cap & Jack Housing.
Use the screwdriver to pry the lid
B. Repeat the step A to unlock the other side.
C Completion.